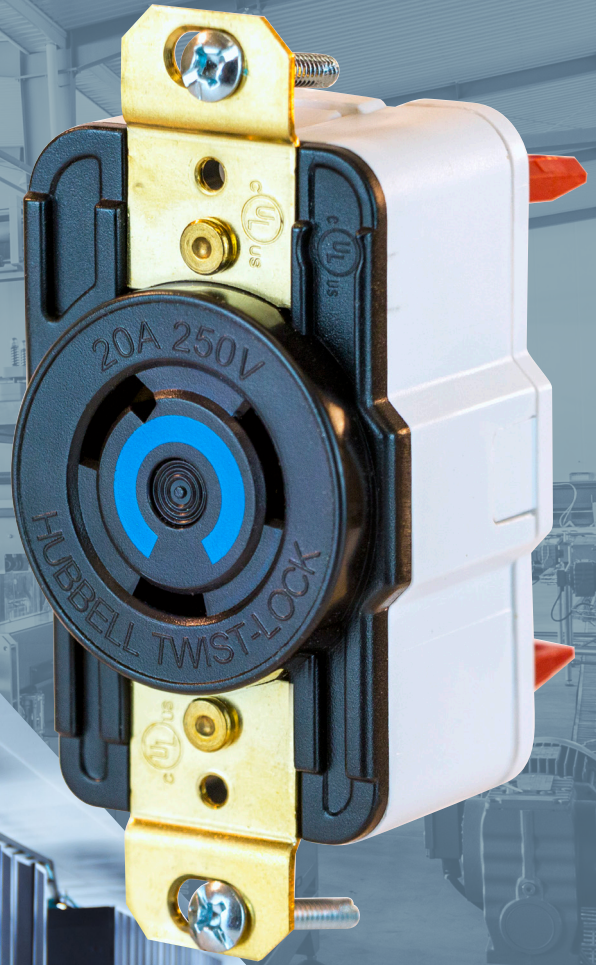


# *Twist-Lock*<sup>®</sup> *Edge* Series

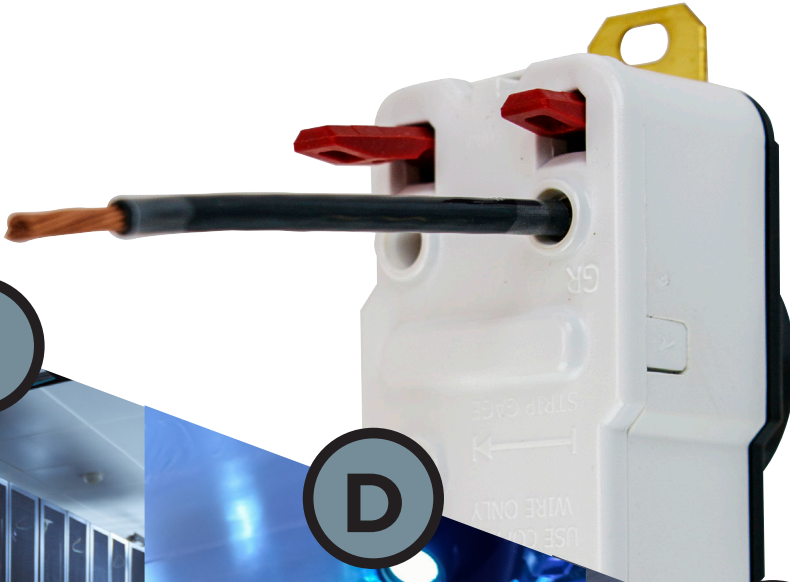
Twist-Lock<sup>®</sup>  
Receptacles  
with Screwless  
Terminations





## Twist-Lock® Receptacles with Screwless Terminations

Hubbell's innovative Twist-Lock® Edge Series receptacles with screwless terminations are the fastest devices to terminate on the market.



### ***Get the Twist-Lock® Edge***

#### **Edge on Speed**

Decrease your installation time by over 80%, technicians can complete the installation completely by hand without a torque driver or wrench

#### **Edge on Safety**

Consistent reliable connection  
No exposed metal on the receptacle

#### **Edge on Durability**

Wires stay tight for the long term, regardless of vibration, temperature cycling or strand relaxation

#### **Edge on Reliability**

Same great quality you have come to expect from Hubbell

# Twist-Lock® Receptacles with Screwless Terminations

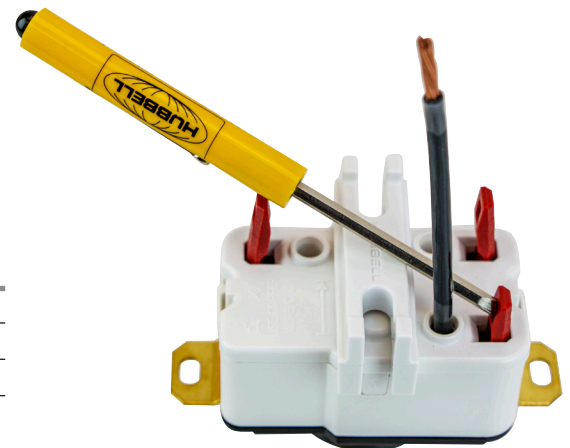
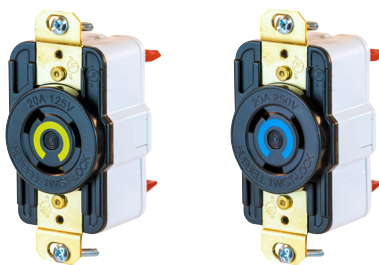
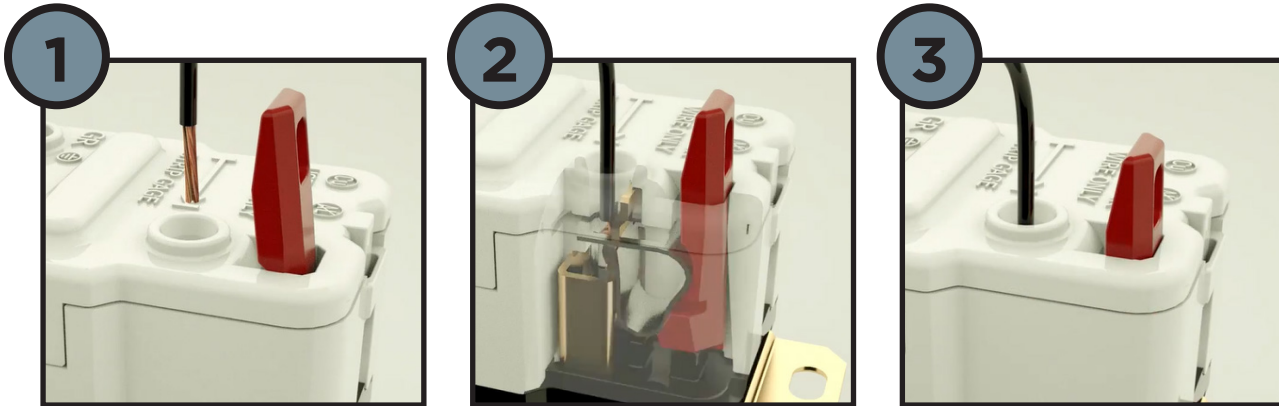
## Features

- Strong spring continues to apply pressure as strands relax
- No exposed metal on receptacles, allowing more devices to be installed closer together
- No torque screwdrivers required for wiring



## Labor Savings

Easy as: 1, 2, 3.



## Twist-Lock® Single Receptacles

Description	Amps	125 Volts	250 Volts
Spring termination locking receptacles	20A	<b>HBL2310ST</b>	<b>HBL2320ST</b>
	30A	<b>HBL2610ST</b>	<b>HBL2620ST</b>

*Note: With this new termination method, the CE Code Part I requirements for the use of a torque driver to secure the terminations are no longer applicable.*

*Note: Terminations can be unwired by simply moving the plunger upwards to the open position.*





# Twist-Lock® Edge Series

## Twist-Lock® Receptacles with Screwless Terminations

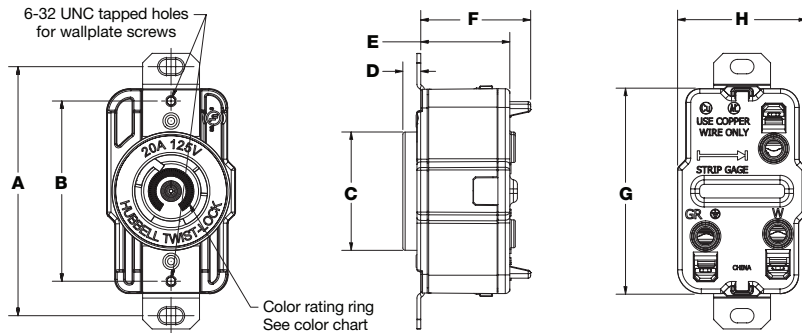


### Product Dimensions Inches (mm)

Catalog Number	Amps	A	B	C	D	E	F	G	H
<b>HBL2310ST</b>	20A	3.28"	2.38"	1.56"	.24"	1.17"	1.45"	2.77"	1.70"
<b>HBL2320ST</b>		(83.3)	(60.3)	(39.6)	(6.0)	(29.8)	(36.8)	(70.4)	(43.2)
<b>HBL2610ST</b>	30A	3.28"	2.38"	1.56"	.24"	1.26"	1.53"	2.77"	1.70"
<b>HBL2620ST</b>		(83.3)	(60.3)	(39.6)	(6.1)	(32.0)	(39.0)	(70.4)	(43.2)

### Certifications

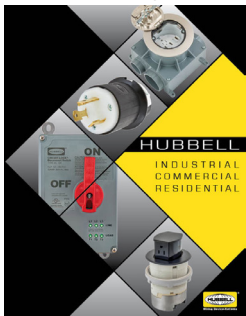
cULus Listed by UL to UL498 and CSA C22.2 No. 42.  
Indoor Dry environment unless protected by additional means.



### Additional Literature

Hubbell offers an extensive literature library for product support. Downloadable PDFs are available online at [www.hubbell-wiring.com](http://www.hubbell-wiring.com).

Hubbell Full Line Catalog



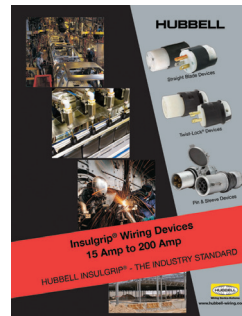
Hubbell Safety Brochure



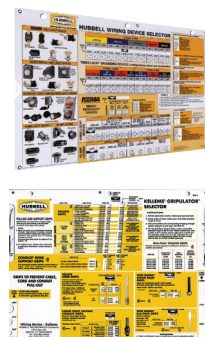
Entertainment Brochure



Insulgrip® Wiring Devices Application Guide



Hubbell Slide Charts



Twist-Lock® Devices

Kellems® Mesh Grips